

Thence N. on true line cut
 3-10. Va 17° 15' E
 5.00 Michx prospect hole
 8.00 road N.W. & S.E.
 25.00 descend on bench
 30.00 end of new survey.

24-618 - Chas Grow to Geo. P. Aldoes, - Pt. N. W 1/4 Sec.

Tr. 6. N-R. 2. E. S. L. M. - Beg. S. W. Cor. sd 1/4, N. 12. 10 chs.

E. 1. 966 chs, S 3° 01' E, 12. 127 chs, W. 188' chs. to beg.

26-56, F. varr Evans to Mariah S. Evans. - Pt. N. W

1/4 Sec. 16. Tr. 6. N-R. 2. E. Beg. 1. 86 chs E. of S. W. Cor.

sd 1/4 Sec. - N 2 1/2° W. 11. 30 chs, E. 9. 54 chs, S 1 1/4° E.

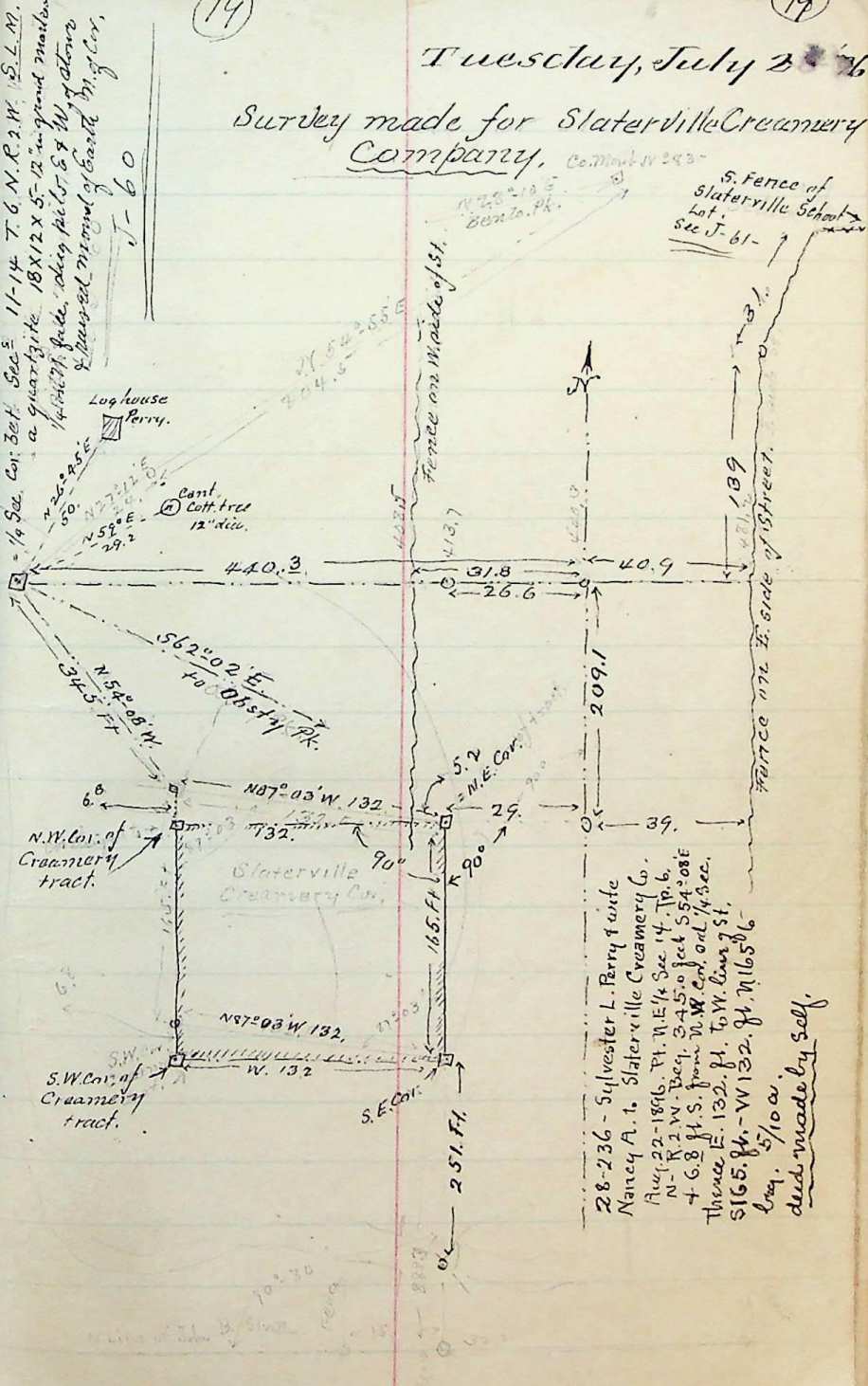
11. 30 chs, W. 9. 25 chs. to beg. (Res. rt. of W. to Co. road.)

A-280, Mariah Frenzier to Wm G. Moyes, Pt. N. E 1/4 17.

T. 6. N-R. 2. E. Beg. 24. 40 chs, W. 8. 97 chs, N. of S. E. Cor. - 71° W

18. 73 chs, N 89 1/4° W. 10. 19 chs, S 0° 45' E 18. 70 chs, E. 9. 66 ch
 to beg.

1/4 Sec. Cor. 3rd Sec. 11-14 T. 6. N. R. 2. W. S. L. M.
 a quartzite 18x12x5-12 in ground marked
 with 1/4" fence, deep pit 5' 8" W of stone
 & passed on road of land by Cor.
 J-60



19
 Tuesday, July 2 76
 Survey made for Slaterville Creamery
 Company, Co. Mont. W 253-

28-236 - Sylvester L. Perry & wife
 Nancy A. to Slaterville Creamery Co.
 Aug. 22-1896. Pt. N. E 1/4 Sec. 14. Tr. 6.
 N-R. 2. W. Beg. 1. 345.0 feet S 54° 08' E
 + 6.8 ft. S. from N. W. Cor. on rd 1/4 Sec.
 Thence E. 132. ft. to W. line of st.
 S 165. ft. - W 132. ft. N 165. ft.
 by 5/10 a.
 deed made by self.

15 7 14-04 0 W